

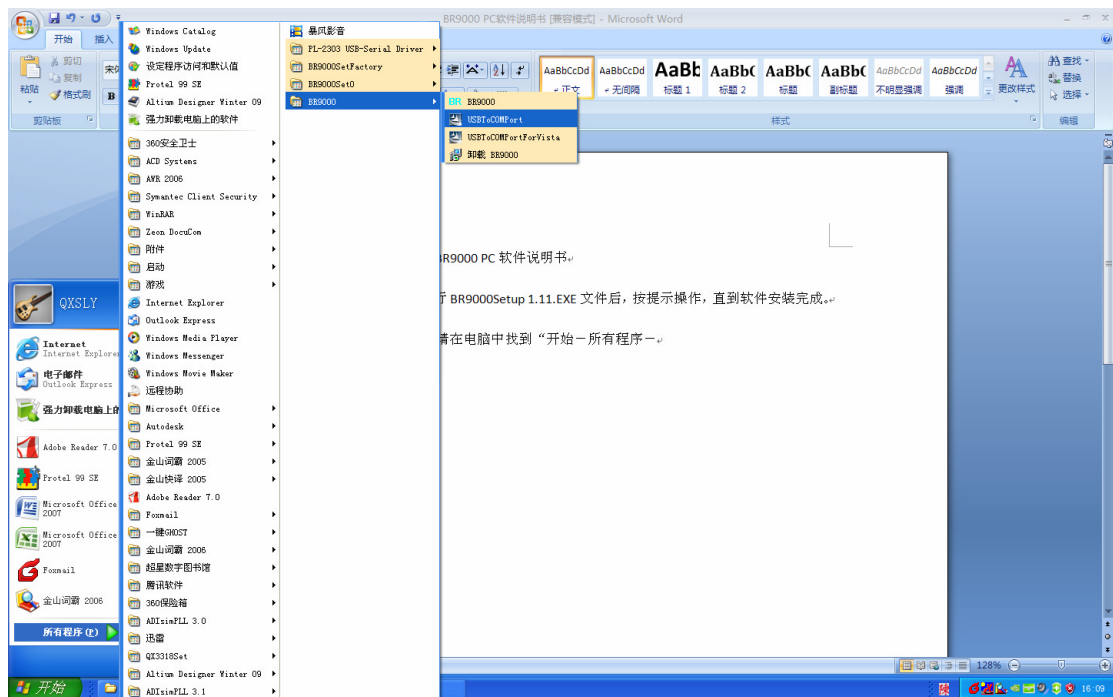
BR9000 PC software manual

☑ Installation:

Please put the CD into CD driver, run BR9000Setup 1.11.EXE files(the host software) and **follow the instructions** till the software is completely installed.

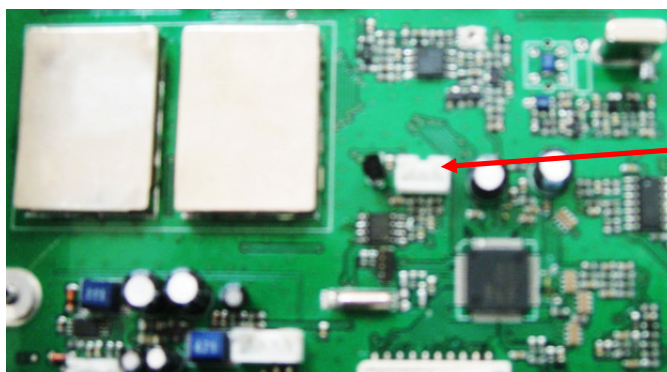
☑ USB driver's installation

After the step I, please find the toolbar from the desktop. And, click "START-ALL PROGRAM-BR9000" successively, then you can find two kinds of USB drivers available. Choose the USB driver (for windows XP or windows vista) that fits your computer's operation system. Then install the USB driver. And restart your computer after you finish the installation.



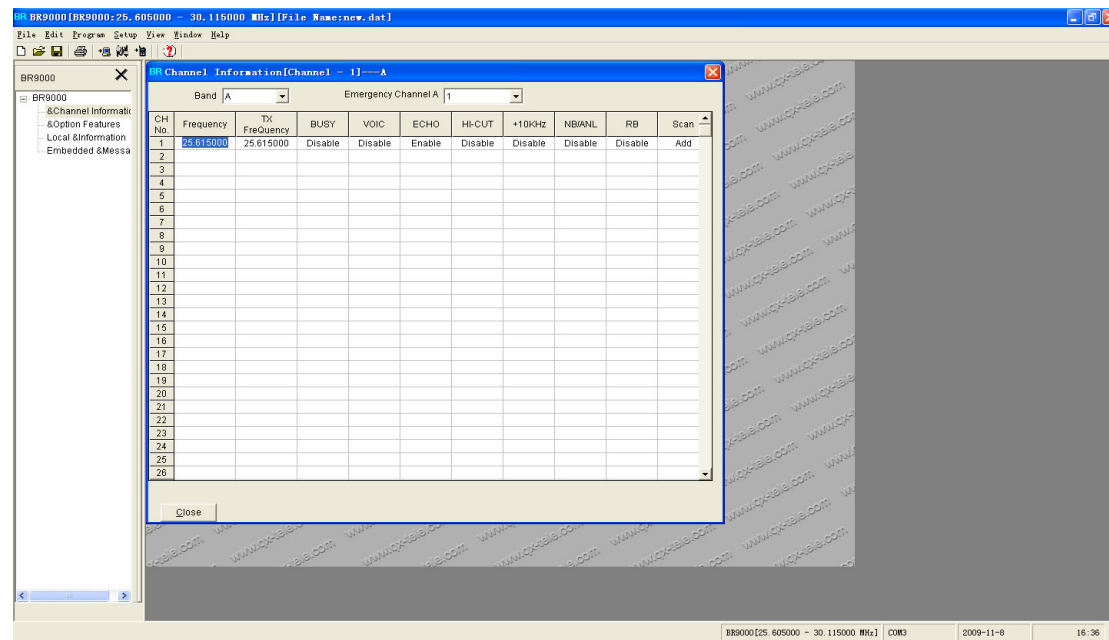
☑ connecting the radio

Please insert the matched USB programming cable into USB port in the computer. Then remove the radio's lower cover and put the other end of USB into the three-core position the arrow pointed to. After that, please plug in and turn on the radio.



☐ Running Program

Please find the toolbar from the desktop. And, click “START-ALL PROGRAM-BR9000” successively. And operate the BR9000. The main interface is as follows:



☐ Interface Instructions:

1、 COM port setting:

Please select COMMUNICATION PORT from SETUP menu. After selecting the matched port for your USB, click OK and exit. COM port setting is necessary only when the software is used for the first time. Otherwise, it is not necessary.

2. Channel information

When setting these options, there will be a channel editing interface on the right.

☐CH NO

This column stands for the number of channels which corresponds with the channel number displayed on LED.

☐BAND

It is a pull-down menu. You can select one band and edit the corresponding channel. The band number from A-F is matched with the respective band buttons of the radio. (Forty channels)

☐Emergency channel(channel nine)

It is the channel which can be adjusted by the “EMG” button in the radio. Push the “EMG” button, the channel become adjustable. Then, you can set an emergency channel respectively all bands from band A to band F.

The following settings from ☐ to ☐ can be done separately at each channel.

☐Frequency

It is used for setting channel's receiving frequency. The frequency range is 25.615—30.105MHZ. You can increase or decrease the frequency (by 10HZ or its multiple) by typing the frequency you need and set it.

☒TX Frequency

It is used for setting channel's transmitting frequency. The frequency range is 25.615—30.105MHZ. You can increase or decrease the frequency (by 10HZ or its multiple) by typing the frequency you need and set it.

☒BUSY function

BUSY Lock function: When ENABLE is selected, the radio can not transmit when receiving signal. The transmission is allowed after the previous signal disappears. When DISABLE is selected, there would be no such function. (Channel one to eight and channel ten to forty are DISABLE. The channel nine is ENABLE)

☒VOIC

This function is not installed in this radio. But it keeps space for radio fan to install this function. The VOIC usage is the same as ECHO.

☒ECHO

ECHO button. When ENABLE is selected, the function ECHO can be used by switch the echo button in the radio. When the DISABLE is selected, the function ECHO can not be used. (All channels are ENABLE)

☒HI—CUT

HI—CUT function: When ENABLE is selected, you can start HI—CUT function. When choosing DISABLE, you can shut off HI—CUT function.(all are ENABLE)

☒+10KHZ

+10KHZ function: When choosing ENABLE, you can start +10KHZ function. When choosing DISABLE, you shut off +10KHZ function.(ENABLE)

☒NB/ANL

NB/ANL function: When choosing ENABLE, you can start NB/ANL function. When choosing DISABLE, you can shut off NB/ANL function. (Enable)

☒RB

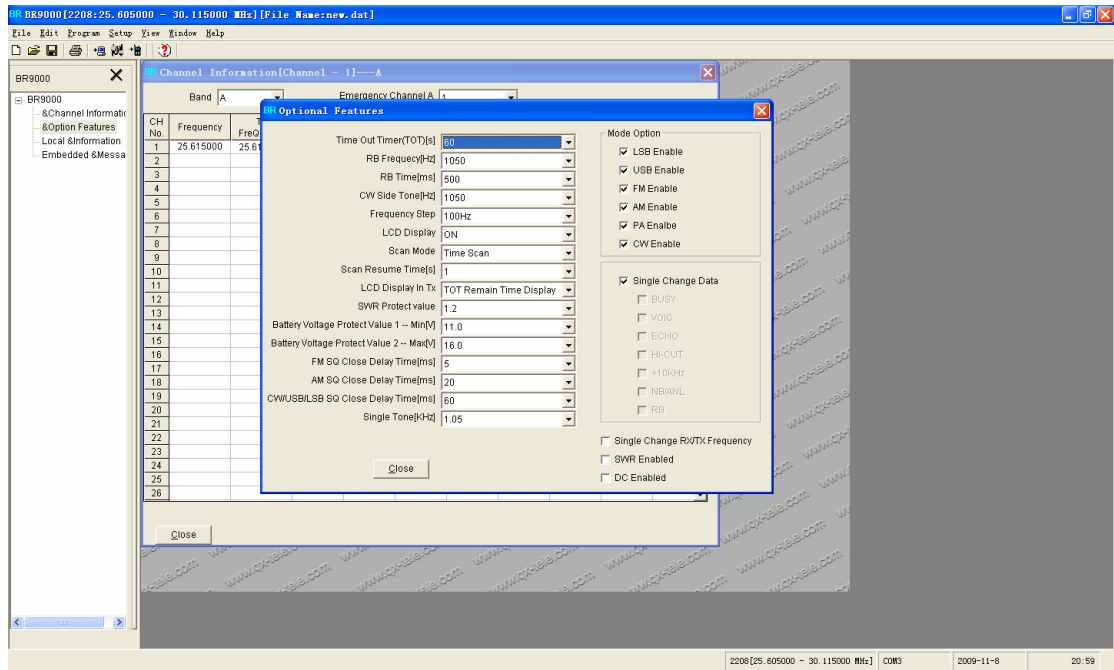
RB function: When choosing ENABLE, you can start RB function. When choosing DISABLE, you can shut off RB function.(Enable)

☒SCAN

ADD and DEL in scan list. When ADD is chosen, it will scan current channel when starting scan function. If DEL is chosen, when starting scan function, it will not scan current channel. (All are ADD)

2、Option feature

When setting this item, there would be an optional menu as bellows:



- Time out timer(TOT)(S) Setup TOT Frequency(For factory setting: 480s)
30-600S step 30S
- RB Frequency(HZ) Setup RB Frequency
0.3-3KHz step 10Hz
- RB Time(ms) Setup RB Time
50-1000ms step 50ms
- CW side tone(HZ) Setup CW side tone Frequency
0.3-3KHz step 10Hz
- Frequency step Setup PUSH KEY step
10k 1k 100HZ
- LCD Display Setup LCD
OFF or ON
- Scan mode Setting scan mode
Squelch scan or Time Scan
- Scan Resume Time(s) Setting scan comeback time
1-60S step 1S
- LCD Display in TX Setting transmission contents on LCD
TX Frequency display or SWR LCD display
Or battery voltage display or TOT remain time display
- SWR protect value
Setting SWR protection value, when starting SWR protection, if the value is beyond this setting value under transmission conditions, it will prohibit transmitting.
1.2-20 step 0.1
- Battery voltage protect value 1-min(v)
Setting DC voltage value, when starting DC voltage protection, if the value is lower than this setting value under transmission

conditions, it will prohibit transmitting.

10.5-17V step 0.1V

- Battery voltage protect value 1-MAX(v)

Setting DC voltage value, when starting DC voltage protection, if the value is beyond this setting value under transmission conditions, it will prohibit transmitting

10.5-17V step 0.1V

- FM sq close delay time(ms)

Setting FM mode, when signal disappears, speaker closed time is put off.

5-300ms step 5ms

- AM sq close delay time(ms)

Setting AM mode, when signal disappears, speaker closed time is put off.

5-300ms step 5ms

- CW/USB/LSB sq close delay time(ms)

Setting CW/USB/LSB mode, when signal disappears, speaker closed time is put off.

5-300ms step 5ms

- Single Tone(HZ)

Setup Single Tone Frequency

0.3-3KHz step 10Hz

- MODE Option

If the following item is not ticked, the radio will prohibit implementing corresponding mode. (factory settings: all are selected)

- Single change data

If this option is selected, only the current channel's RB function is open when you push the RB button in the radio. Otherwise, RB function of all channels will be open when you push RB button in the radio. (Factory settings: ALL open)

- Single change RX/TX Frequency

When the option is selected, you can only change receiving frequency when receiving signal. Or, only change transmitting frequency when transmitting signal.

When the option is not selected, you can change both receiving and transmitting frequency no matter you are receiving or transmitting signal.

- SWR enabled

When it is selected, it will start the SWR test protection. (ENABLED)

- (21) DC enabled

When it is selected, it will start DC test protection.

3、 Local & information

When it is chosen, you can register customer information in the radio for record.

4、 Embedded & Message

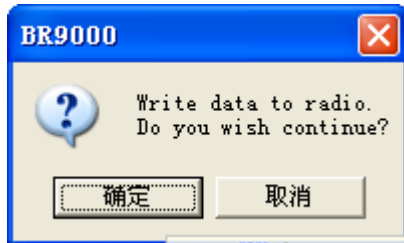
When this option is selected, software will read some radio information, such as, date of manufacture, software version, maintenance record, series number and etc. information is fixed when manufactured and cannot be changed, but some can be adjusted by our supported software. This software is BR9000SetOSetup 1.0.EXE

from CD. Please install and use it.

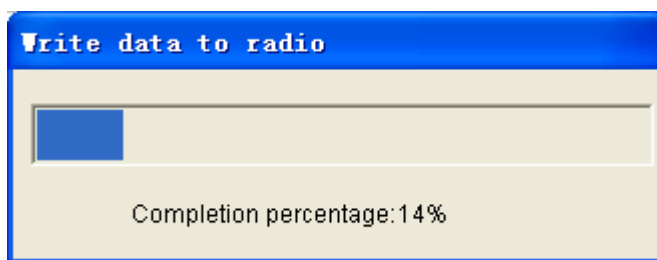
□ Reading, Writing data

1、 Writing data

After finishing the above five steps, click the PROGRAM pull-down menu and select the WRIT TO RADIO, then there would be a dialogue box as bellows:



Please click OK (left), then it will display programming process, as bellows:



When it is finished, please click Ok and exit.



After all the above settings, the writing process is completed. Then, you can write the same data into a series of radios.

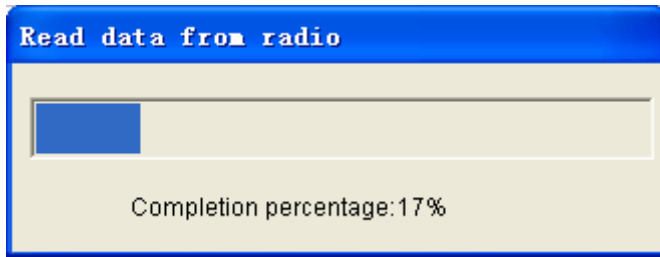
2、 Reading data

The data can be read when the radio is well connected with the computer. The computer will read the data and save, or write the data into another radio, or rewrite the data after modification.

Please select REAAD FROM RADIO fro host interface PORGRAM down menu and, then it shows following command window:



Please click OK (left), it will display reading data process as followings:



When it is finished, click OK to exit.



Now, you can process the data.

3. Data storage

If you want to save the settings, select the SAVE or SAVE AS in the pull-down menu of the FILE of the host interface. And then, save the data by following the instructions.

4. Open data

To get previous data you saved, you can follow the steps: click the OPEN menu in the pull-down menu of the FILE in the host interface. Find the data name you want by following the tips. Click OPEN, then the data will be saved automatically in the software.

5. By clicking the NEW menu in the pull-down menu of the FILE in the host interface, then you can start a new data.

6. Loading factory initial data

Select INIRIAL SETTING from the pull-down menu of the SETUP menu in the host interface. After that, the software would automatically upload the initial data which is the same as the data after the reset operation.