

OVERALL ALIGNMENT

Control Setting	Test Instrument Connection	Adjust	Result
OFF/VOLUME control: ON. SQUELCH control: CCW. Select channels 7.	Connect the FM signal generator to the ANT jack and the AC SSVM to the earphone jack across an 8-ohm dummy load. See Figure 9.	TC4	Set the signal generator frequency to 380 MHz, 3 kHz deviation, and adjust TC4 for maximum sensitivity.

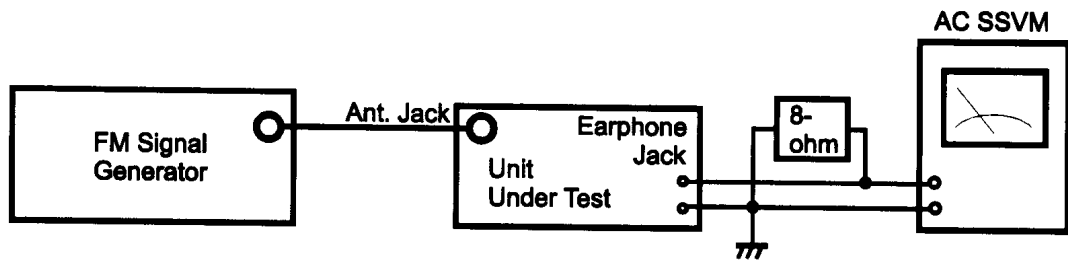
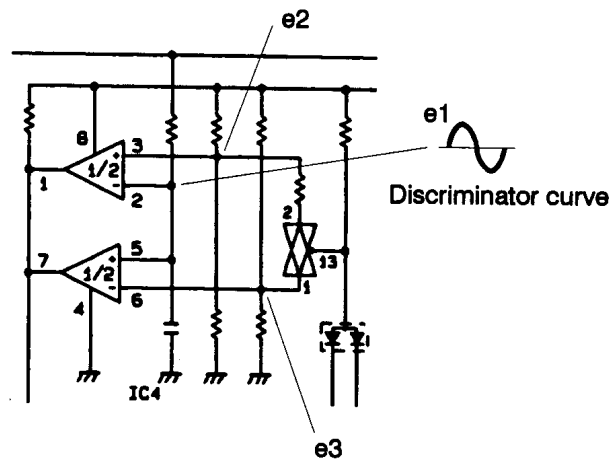


Figure 9

Zeromatic Function Test Procedure



Zeromatic functions when OUTPUT is L.

	$0 < e1 < e3$	$e3 < e1 < e2$	$e2 < e1 < V_{cc}$
OUTPUT (IC4 Pins 1 and 7)	H	L	H

To adjust the $e1$ voltage, receive a signal in the manual mode and set T8 to obtain 2.0 volts DC at TP6.

If Zeromatic does not function correctly, refer to "Reference Frequency Osc. Alignment", check that the frequency is 98.700000 ± 10 Hz, and adjust T8 again to 2.0 volts DC at TP5 while a signal is being received.